



MedicalManagement

turning good practices into great businesses

# Physician Reporting Package Sample, April 2010

**Physician Practice, USA  
Monthly Financial Summary (DOE)**

Company Name	Data	Aug-09	Sep-09	Oct-09	Nov-09	Dec-09	Jan-10	Feb-10	Mar-10	Apr-10	YTD Total 2010	12-Month Average
Physician Practice, USA	Charges	\$982,250	\$1,096,662	\$1,087,805	\$999,102	\$1,038,159	\$897,170	\$1,008,522	\$1,278,128	\$932,142	\$4,115,962	\$1,045,783
	Non Coll Adj	\$704,584	\$615,499	\$700,261	\$681,660	\$710,390	\$424,605	\$797,167	\$754,570	\$656,610	\$2,632,952	\$691,673
	Coll Adj	\$2,352	\$6,207	\$5,838	\$5,499	\$1,908	\$3,695	\$3,465	\$3,061	\$2,439	\$12,661	\$3,334
	Payments	\$398,691	\$346,597	\$388,877	\$353,696	\$370,446	\$263,622	\$364,612	\$409,627	\$354,645	\$1,392,505	\$375,401
	End A/R DOE	\$840,710	\$969,069	\$961,899	\$920,146	\$875,561	\$1,080,809	\$924,088	\$1,034,958	\$953,406	N/A	\$979,661
	Visits	1,692	1,846	1,800	1,599	1,670	1,465	1,644	2,083	1,492	6,684	1,681
	Procedures	2,035	2,175	2,097	1,898	1,980	1,747	1,998	2,476	1,826	8,047	2,022

Doctor Name	Data	Aug-09	Sep-09	Oct-09	Nov-09	Dec-09	Jan-10	Feb-10	Mar-10	Apr-10	YTD Total 2010	12-Month Average
Doctor Name	Charges	\$40,665	\$140,340	\$155,691	\$122,332	\$121,245	\$120,163	\$130,490	\$145,790	\$124,938	\$521,381	\$124,124
	Adjustments	\$76,147	\$44,137	\$94,386	\$73,399	\$95,806	\$58,665	\$93,890	\$95,069	\$78,073	\$325,696	\$81,352
	Payments	\$44,492	\$30,693	\$56,885	\$39,493	\$52,958	\$35,531	\$43,169	\$61,016	\$42,373	\$182,088	\$46,612
	End A/R DOE	\$61,440	\$126,950	\$131,371	\$140,811	\$113,293	\$139,260	\$132,691	\$122,397	\$126,889	N/A	\$127,850
	Visits	75	200	208	166	166	176	168	212	142	698	169
	Procedures	82	229	230	225	183	187	214	233	189	823	201
Doctor Name	Charges	\$128,339	\$107,453	\$109,647	\$107,690	\$140,004	\$86,881	\$124,783	\$181,955	\$148,733	\$542,352	\$117,152
	Adjustments	\$49,050	\$71,002	\$69,972	\$80,319	\$73,868	\$48,966	\$85,384	\$101,762	\$91,536	\$327,647	\$75,505
	Payments	\$31,136	\$39,027	\$41,207	\$41,771	\$39,309	\$32,479	\$40,351	\$55,053	\$46,893	\$174,776	\$41,530
	End A/R DOE	\$97,219	\$94,643	\$93,111	\$78,712	\$105,538	\$110,975	\$110,023	\$135,163	\$145,467	N/A	\$102,876
	Visits	294	224	234	230	311	233	272	323	278	1,106	248
	Procedures	308	273	262	245	342	241	313	370	342	1,266	278
Doctor Name	Charges	\$98,405	\$142,157	\$124,709	\$91,315	\$129,483	\$98,037	\$96,244	\$145,757	\$100,013	\$440,051	\$112,082
	Adjustments	\$69,149	\$63,479	\$85,507	\$72,223	\$63,862	\$48,143	\$88,822	\$74,830	\$75,962	\$287,757	\$74,545
	Payments	\$37,407	\$32,524	\$44,639	\$37,384	\$34,347	\$30,164	\$45,316	\$40,262	\$43,267	\$159,009	\$40,306
	End A/R DOE	\$50,544	\$96,698	\$91,260	\$72,969	\$104,242	\$123,973	\$86,078	\$116,743	\$97,528	N/A	\$97,159
	Visits	133	186	176	156	156	158	137	227	128	650	157
	Procedures	152	217	222	170	207	174	159	274	157	764	191
<b>Total Charges</b>		<b>\$982,250</b>	<b>\$1,096,662</b>	<b>\$1,087,805</b>	<b>\$999,102</b>	<b>\$1,038,159</b>	<b>\$897,170</b>	<b>\$1,008,522</b>	<b>\$1,278,128</b>	<b>\$932,142</b>	<b>\$4,115,962</b>	<b>\$1,045,783</b>
<b>Total Adjustments</b>		<b>\$706,936</b>	<b>\$621,706</b>	<b>\$706,099</b>	<b>\$687,159</b>	<b>\$712,298</b>	<b>\$428,300</b>	<b>\$800,632</b>	<b>\$757,631</b>	<b>\$659,050</b>	<b>\$2,645,612</b>	<b>\$695,008</b>
<b>Total Payments</b>		<b>\$398,691</b>	<b>\$346,597</b>	<b>\$388,877</b>	<b>\$353,696</b>	<b>\$370,446</b>	<b>\$263,622</b>	<b>\$364,612</b>	<b>\$409,627</b>	<b>\$354,645</b>	<b>\$1,392,505</b>	<b>\$375,401</b>
<b>Total End A/R DOE</b>		<b>\$840,710</b>	<b>\$969,069</b>	<b>\$961,899</b>	<b>\$920,146</b>	<b>\$875,561</b>	<b>\$1,080,809</b>	<b>\$924,088</b>	<b>\$1,034,958</b>	<b>\$953,406</b>	<b>N/A</b>	<b>\$979,661</b>
<b>Total Visits</b>		<b>1,692</b>	<b>1,846</b>	<b>1,800</b>	<b>1,599</b>	<b>1,670</b>	<b>1,465</b>	<b>1,644</b>	<b>2,083</b>	<b>1,492</b>	<b>6,684</b>	<b>1,681</b>
<b>Total Procedures</b>		<b>2,035</b>	<b>2,175</b>	<b>2,097</b>	<b>1,898</b>	<b>1,980</b>	<b>1,747</b>	<b>1,998</b>	<b>2,476</b>	<b>1,826</b>	<b>8,047</b>	<b>2,022</b>

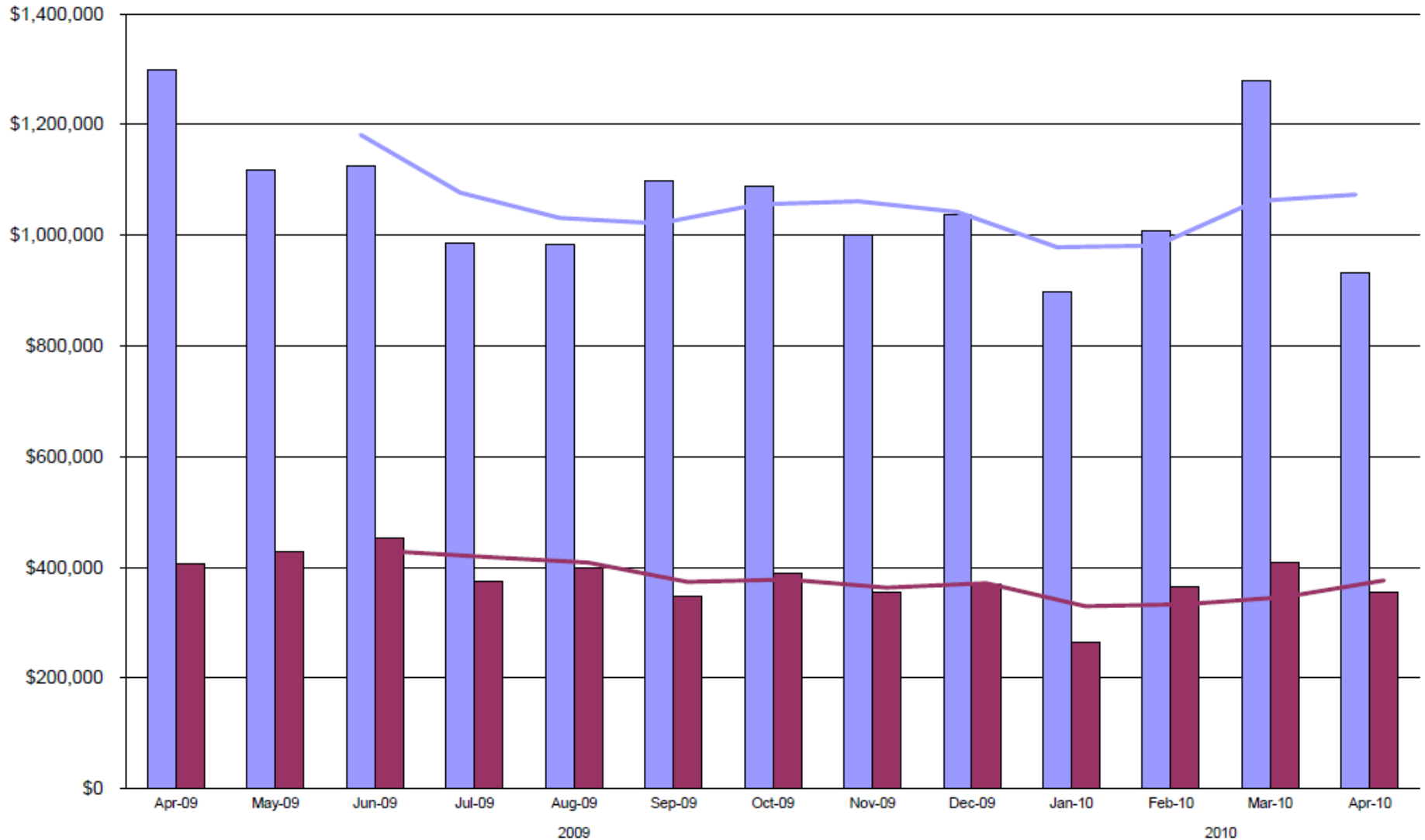
**Physician Practice, USA  
Monthly Financial Summary  
by Financial Class (DOE)**

Financial Class	Data	Sep-09	Oct-09	Nov-09	Dec-09	Jan-10	Feb-10	Mar-10	Apr-10	YTD Total 2010	12-Month Average
<b>Aetna</b>	Charges	\$29,465	\$23,130	\$18,306	\$31,190	\$24,691	\$36,035	\$36,940	\$19,752	\$117,418	\$27,307
	Adjustments	\$17,805	\$15,675	\$12,170	\$18,768	\$14,195	\$15,321	\$29,917	\$19,393	\$78,826	\$16,310
	Payments	\$11,727	\$11,274	\$9,423	\$10,650	\$9,670	\$8,146	\$13,476	\$11,410	\$42,703	\$10,280
	End A/R DOE	\$30,826	\$27,007	\$23,720	\$25,492	\$26,317	\$38,885	\$32,432	\$21,381	N/A	\$28,490
	Visits	42	38	30	50	44	46	51	36	177	41
	Procedures	48	42	32	57	46	56	59	38	199	46
<b>Blue Cross</b>	Charges	\$148,120	\$136,642	\$167,941	\$178,284	\$137,506	\$133,705	\$172,779	\$147,502	\$591,492	\$147,324
	Adjustments	\$74,938	\$87,629	\$80,512	\$121,921	\$92,628	\$80,669	\$99,766	\$107,827	\$380,891	\$93,174
	Payments	\$47,218	\$58,396	\$53,302	\$66,422	\$58,607	\$57,706	\$61,716	\$62,124	\$240,154	\$59,299
	End A/R DOE	\$106,977	\$97,594	\$131,722	\$121,663	\$107,934	\$103,263	\$114,560	\$92,110	N/A	\$111,888
	Visits	224	222	245	252	215	204	277	209	905	224
	Procedures	255	247	280	294	261	229	306	244	1,040	258
<b>Cigna</b>	Charges	\$18,063	\$22,938	\$19,210	\$11,714	\$14,027	\$18,576	\$17,646	\$13,275	\$63,524	\$16,423
	Adjustments	\$10,578	\$16,954	\$15,851	\$12,790	\$5,579	\$9,993	\$14,599	\$10,084	\$40,254	\$11,584
	Payments	\$4,938	\$9,018	\$7,874	\$4,145	\$2,720	\$4,642	\$6,665	\$5,978	\$20,005	\$5,762
	End A/R DOE	\$17,886	\$14,853	\$10,337	\$5,117	\$10,845	\$14,786	\$11,168	\$8,381	N/A	\$12,577
	Visits	23	30	28	17	23	28	32	24	107	26
	Procedures	26	33	31	19	25	34	33	28	120	29
<b>Kaiser</b>	Charges	\$0	\$0	\$0	\$0	\$2,407	\$919	\$1,824	\$1,687	\$6,837	\$1,551
	Adjustments	\$1,445	\$1,954		\$170	\$0	\$572	\$0	\$726	\$1,298	\$990
	Payments	\$2,293	\$1,350		\$181	\$0	\$1,551	\$284	\$1,666	\$3,501	\$1,154
	End A/R DOE	\$3,874	\$570	\$570	\$219	\$2,626	\$1,422	\$2,962	\$2,257	N/A	\$3,637
	Visits	0	0		0	5	1	3	3	12	2
	Procedures	0	0		0	8	4	8	9	29	5
<b>Medicare</b>	Charges	\$398,323	\$359,211	\$304,516	\$327,232	\$315,612	\$316,101	\$453,437	\$323,352	\$1,408,502	\$350,473
	Adjustments	\$233,500	\$278,840	\$253,397	\$238,252	\$34,049	\$428,715	\$271,273	\$244,838	\$978,875	\$256,398
	Payments	\$103,332	\$107,121	\$94,494	\$99,979	\$24,978	\$132,015	\$105,424	\$95,892	\$358,310	\$98,877
	End A/R DOE	\$290,902	\$264,152	\$220,777	\$209,777	\$466,362	\$221,733	\$298,472	\$281,094	N/A	\$279,900
	Visits	648	570	495	535	508	518	716	500	2,242	550
	Procedures	813	705	618	667	613	668	901	641	2,823	702
<b>United Healthcare</b>	Charges	\$42,545	\$44,351	\$36,762	\$39,198	\$29,702	\$36,800	\$53,371	\$34,101	\$153,974	\$37,016
	Adjustments	\$24,170	\$20,750	\$31,224	\$23,189	\$18,118	\$22,011	\$38,336	\$25,639	\$104,105	\$24,175
	Payments	\$14,644	\$14,518	\$16,143	\$11,961	\$9,605	\$11,853	\$19,394	\$13,483	\$54,335	\$13,611
	End A/R DOE	\$22,636	\$31,719	\$21,114	\$25,161	\$27,139	\$30,075	\$25,716	\$20,695	N/A	\$24,679
	Visits	76	79	53	56	40	60	84	48	232	57
	Procedures	80	87	64	64	43	67	92	54	256	66
<b>Total Charges</b>		<b>\$1,096,662</b>	<b>\$1,087,805</b>	<b>\$999,102</b>	<b>#####</b>	<b>\$897,170</b>	<b>\$1,008,522</b>	<b>\$1,278,128</b>	<b>\$932,142</b>	<b>\$4,115,962</b>	<b>\$1,045,783</b>
<b>Total Adjustments</b>		<b>\$621,706</b>	<b>\$706,099</b>	<b>\$687,159</b>	<b>\$712,298</b>	<b>\$428,300</b>	<b>\$800,632</b>	<b>\$757,631</b>	<b>\$659,050</b>	<b>\$2,645,612</b>	<b>\$695,008</b>
<b>Total Payments</b>		<b>\$346,597</b>	<b>\$388,877</b>	<b>\$353,696</b>	<b>\$370,446</b>	<b>\$263,622</b>	<b>\$364,612</b>	<b>\$409,627</b>	<b>\$354,645</b>	<b>\$1,392,505</b>	<b>\$375,401</b>
<b>Total End A/R DOE</b>		<b>\$969,069</b>	<b>\$961,899</b>	<b>\$920,146</b>	<b>\$875,561</b>	<b>\$1,080,809</b>	<b>\$924,088</b>	<b>\$1,034,958</b>	<b>\$953,406</b>	<b>N/A</b>	<b>\$979,661</b>
<b>Total Visits</b>		<b>1,846</b>	<b>1,800</b>	<b>1,599</b>	<b>1,670</b>	<b>1,465</b>	<b>1,644</b>	<b>2,083</b>	<b>1,492</b>	<b>6,684</b>	<b>1,681</b>
<b>Total Procedures</b>		<b>2,175</b>	<b>2,097</b>	<b>1,898</b>	<b>1,980</b>	<b>1,747</b>	<b>1,998</b>	<b>2,476</b>	<b>1,826</b>	<b>8,047</b>	<b>2,022</b>

**Physician Practice, USA  
Monthly Financial Summary  
by Payer by Provider (DOE)**

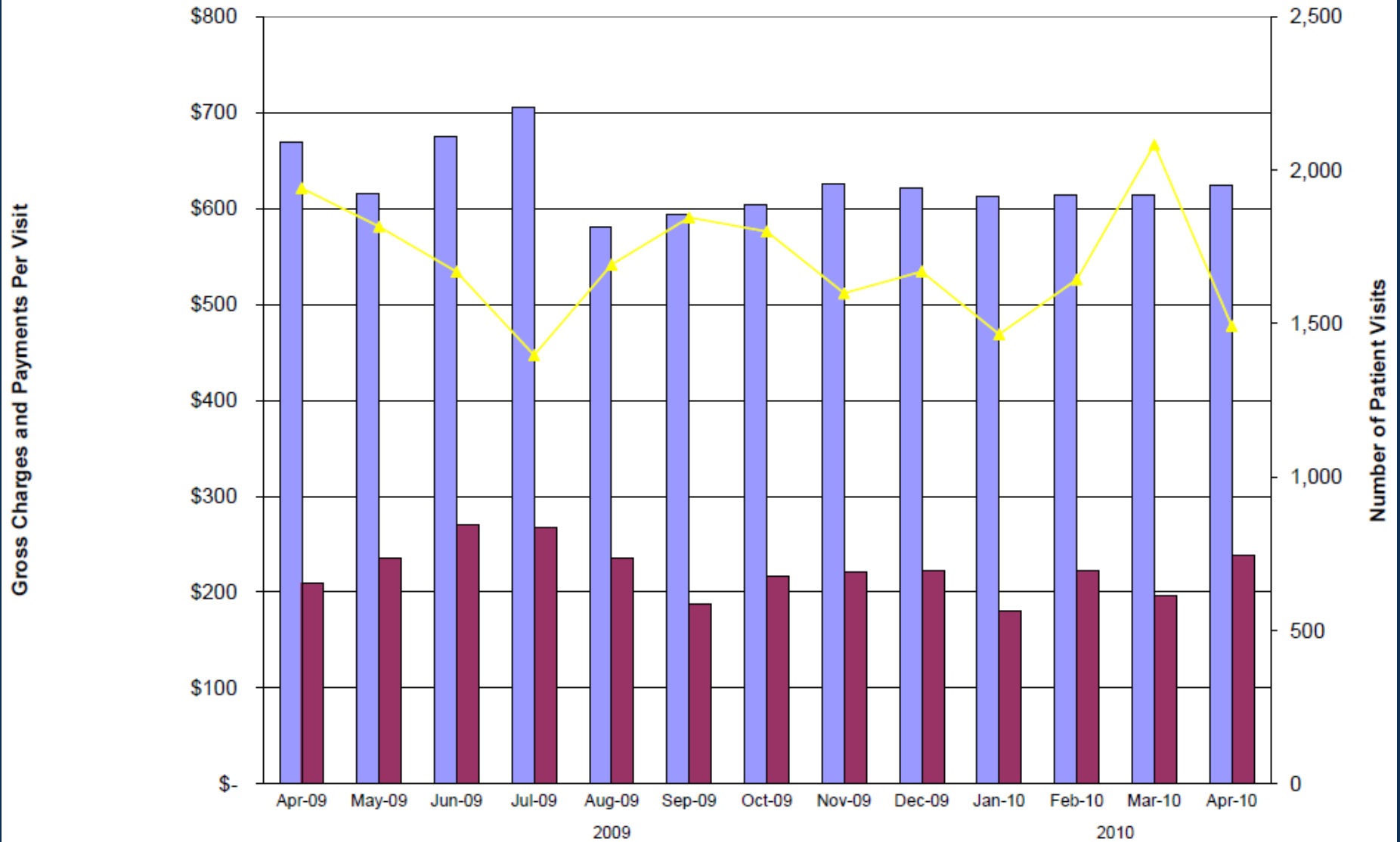
Doctor Name	Financial Class	Data	Sep-09	Oct-09	Nov-09	Dec-09	Jan-10	Feb-10	Mar-10	Apr-10	YTD Total 2010	12-Month Average
Doctor Name	Aetna	Charges	\$2,238	\$8,919	\$1,119	\$4,563	\$5,538	\$4,348	\$12,986	\$4,690	\$27,562	\$5,019
		Adjustments	\$334	\$1,276	\$2,472	\$3,487	\$2,597	\$3,091	\$6,800	\$4,793	\$17,281	\$2,834
		Payments	\$754	\$1,493	\$2,081	\$1,367	\$2,173	\$2,429	\$3,507	\$2,070	\$10,179	\$1,928
		End A/R DOE	\$2,527	\$8,677	\$5,243	\$4,952	\$5,720	\$4,548	\$7,227	\$5,054	N/A	\$5,158
		Visits	6	9	2	11	10	7	12	6	35	7
		Procedures	6	11	2	11	10	7	16	7	40	8
	Affinity	Charges	\$3,164	\$4,064	\$5,013	\$1,588	\$8,288	\$2,014	\$1,657	\$3,403	\$15,362	\$3,774
		Adjustments	\$4,142	\$3,533	\$223	\$3,020	\$668	\$2,392	\$3,068	\$3,525	\$9,653	\$2,502
		Payments	\$3,031	\$2,919	\$221	\$2,041	\$579	\$1,981	\$2,547	\$2,607	\$7,714	\$1,963
		End A/R DOE	\$8,748	\$6,360	\$10,929	\$7,456	\$14,497	\$12,138	\$8,180	\$5,451	N/A	\$10,571
		Visits	3	5	6	3	8	3	3	6	20	5
		Procedures	4	5	7	3	9	3	3	6	21	5
	Blue Cross	Charges	\$28,742	\$26,757	\$25,737	\$31,234	\$37,464	\$19,215	\$31,073	\$22,440	\$110,192	\$23,322
		Adjustments	\$10,849	\$20,152	\$9,305	\$22,473	\$23,692	\$12,521	\$18,342	\$15,705	\$70,260	\$14,759
		Payments	\$5,384	\$12,800	\$7,232	\$11,149	\$13,834	\$10,255	\$12,328	\$8,303	\$44,719	\$9,684
		End A/R DOE	\$19,031	\$12,836	\$22,035	\$19,648	\$19,586	\$16,025	\$16,428	\$14,861	N/A	\$16,186
		Visits	33	33	32	38	54	27	45	21	147	31
		Procedures	37	38	41	44	58	28	48	27	161	36
	Cigna	Charges	\$6,510	\$5,020	\$2,468	\$1,517	\$1,852	\$1,877	\$2,503	\$426	\$6,658	\$3,456
		Adjustments	\$2,300	\$6,402	\$2,994	\$285	\$1,499	\$591	\$2,002	\$691	\$4,783	\$2,489
Payments		\$868	\$3,409	\$975	\$190	\$671	\$248	\$1,212	\$640	\$2,771	\$1,260	
End A/R DOE		\$7,303	\$2,512	\$1,011	\$2,053	\$1,735	\$2,773	\$2,062	\$1,157	N/A	\$3,596	
Visits		7	6	2	2	3	3	5	3	14	5	
Procedures		8	7	3	2	3	4	5	3	15	6	
<b>Doctor Name Charges</b>			<b>\$155,296</b>	<b>\$157,600</b>	<b>\$149,789</b>	<b>\$139,151</b>	<b>\$146,842</b>	<b>\$132,795</b>	<b>\$169,123</b>	<b>\$118,731</b>	<b>\$567,491</b>	<b>\$148,777</b>
<b>Doctor Name Adjustments</b>			<b>\$107,442</b>	<b>\$108,194</b>	<b>\$122,922</b>	<b>\$108,357</b>	<b>\$54,139</b>	<b>\$122,948</b>	<b>\$117,589</b>	<b>\$76,627</b>	<b>\$371,303</b>	<b>\$102,368</b>
<b>Doctor Name Payments</b>			<b>\$59,758</b>	<b>\$52,178</b>	<b>\$54,375</b>	<b>\$52,997</b>	<b>\$32,681</b>	<b>\$48,005</b>	<b>\$52,919</b>	<b>\$40,835</b>	<b>\$174,440</b>	<b>\$49,916</b>
<b>Doctor Name End A/R DOE</b>			<b>\$146,168</b>	<b>\$143,396</b>	<b>\$115,888</b>	<b>\$93,686</b>	<b>\$153,708</b>	<b>\$115,550</b>	<b>\$114,165</b>	<b>\$115,434</b>	<b>N/A</b>	<b>\$134,000</b>
<b>Doctor Name Visits</b>			<b>254</b>	<b>231</b>	<b>212</b>	<b>199</b>	<b>170</b>	<b>224</b>	<b>264</b>	<b>207</b>	<b>865</b>	<b>216</b>
<b>Doctor Name Procedures</b>			<b>286</b>	<b>287</b>	<b>236</b>	<b>247</b>	<b>245</b>	<b>242</b>	<b>336</b>	<b>229</b>	<b>1,052</b>	<b>262</b>
<b>Total Charges</b>			<b>\$1,096,662</b>	<b>\$1,087,805</b>	<b>\$999,102</b>	<b>\$1,038,159</b>	<b>\$897,170</b>	<b>\$1,008,522</b>	<b>\$1,278,128</b>	<b>\$932,142</b>	<b>\$4,115,962</b>	<b>\$1,045,783</b>
<b>Total Adjustments</b>			<b>\$621,706</b>	<b>\$706,099</b>	<b>\$687,159</b>	<b>\$712,298</b>	<b>\$428,300</b>	<b>\$800,632</b>	<b>\$757,631</b>	<b>\$659,050</b>	<b>\$2,645,612</b>	<b>\$695,008</b>
<b>Total Payments</b>			<b>\$346,597</b>	<b>\$388,877</b>	<b>\$353,696</b>	<b>\$370,446</b>	<b>\$263,622</b>	<b>\$364,612</b>	<b>\$409,627</b>	<b>\$354,645</b>	<b>\$1,392,505</b>	<b>\$375,401</b>
<b>Total End A/R DOE</b>			<b>\$969,069</b>	<b>\$961,899</b>	<b>\$920,146</b>	<b>\$875,561</b>	<b>\$1,080,809</b>	<b>\$924,088</b>	<b>\$1,034,958</b>	<b>\$953,406</b>	<b>N/A</b>	<b>\$979,661</b>
<b>Total Visits</b>			<b>1,846</b>	<b>1,800</b>	<b>1,599</b>	<b>1,670</b>	<b>1,465</b>	<b>1,644</b>	<b>2,083</b>	<b>1,492</b>	<b>6,684</b>	<b>1,681</b>
<b>Total Procedures</b>			<b>2,175</b>	<b>2,097</b>	<b>1,898</b>	<b>1,980</b>	<b>1,747</b>	<b>1,998</b>	<b>2,476</b>	<b>1,826</b>	<b>8,047</b>	<b>2,022</b>

**Physician Practice, USA**  
**Gross Charges and Payments (DOE)**  
 (With 3-month moving average trendline)



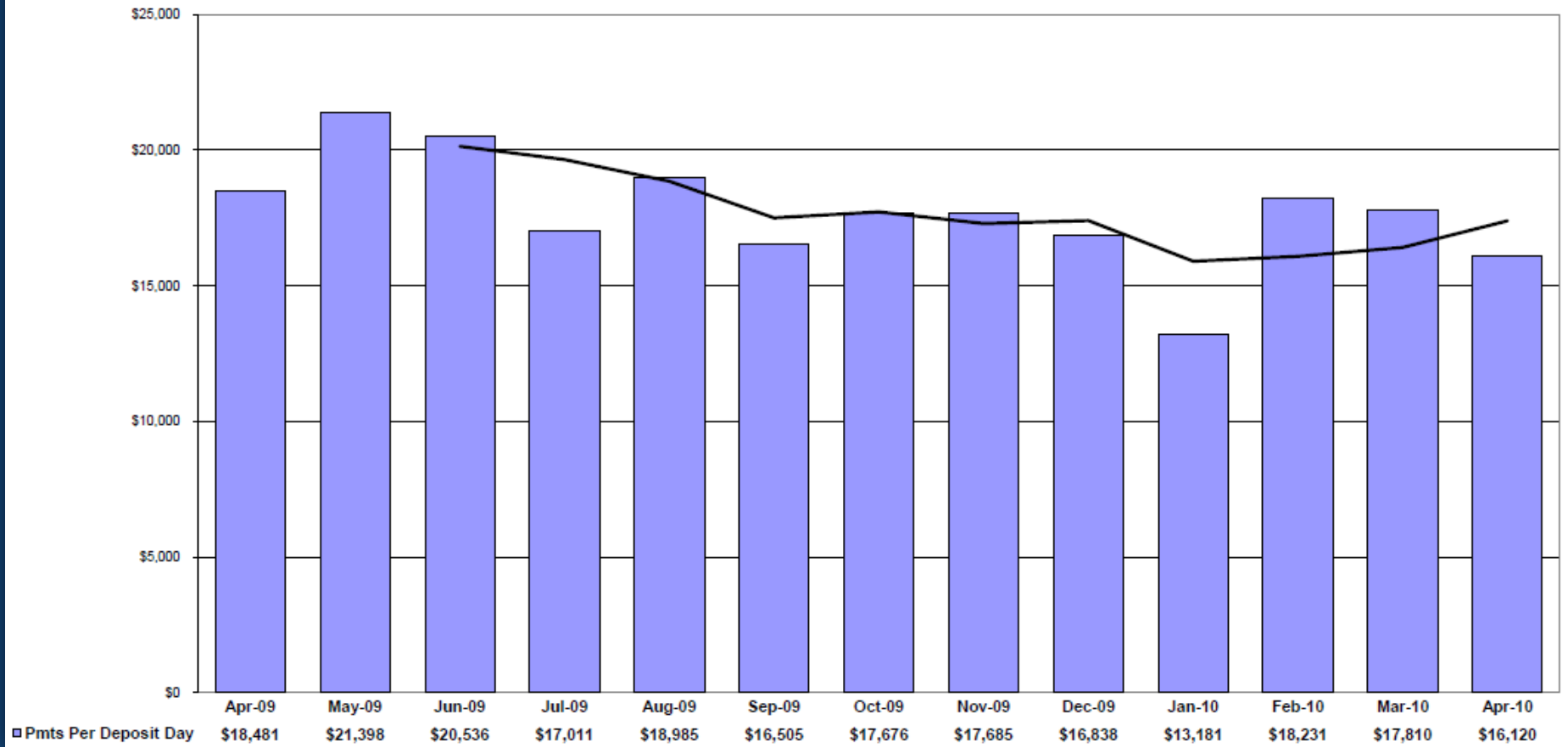
	2009					2010							
■ Gross Charges	\$1,298,222	\$1,118,598	\$1,125,956	\$984,900	\$982,250	\$1,096,662	\$1,087,805	\$999,102	\$1,038,159	\$897,170	\$1,008,522	\$1,278,128	\$932,142
■ Total Payments	\$406,591	\$427,964	\$451,802	\$374,238	\$398,691	\$346,597	\$388,877	\$353,696	\$370,446	\$263,622	\$364,612	\$409,627	\$354,645

### Physician Practice, USA Gross Charges and Payments Per Visit (DOE)

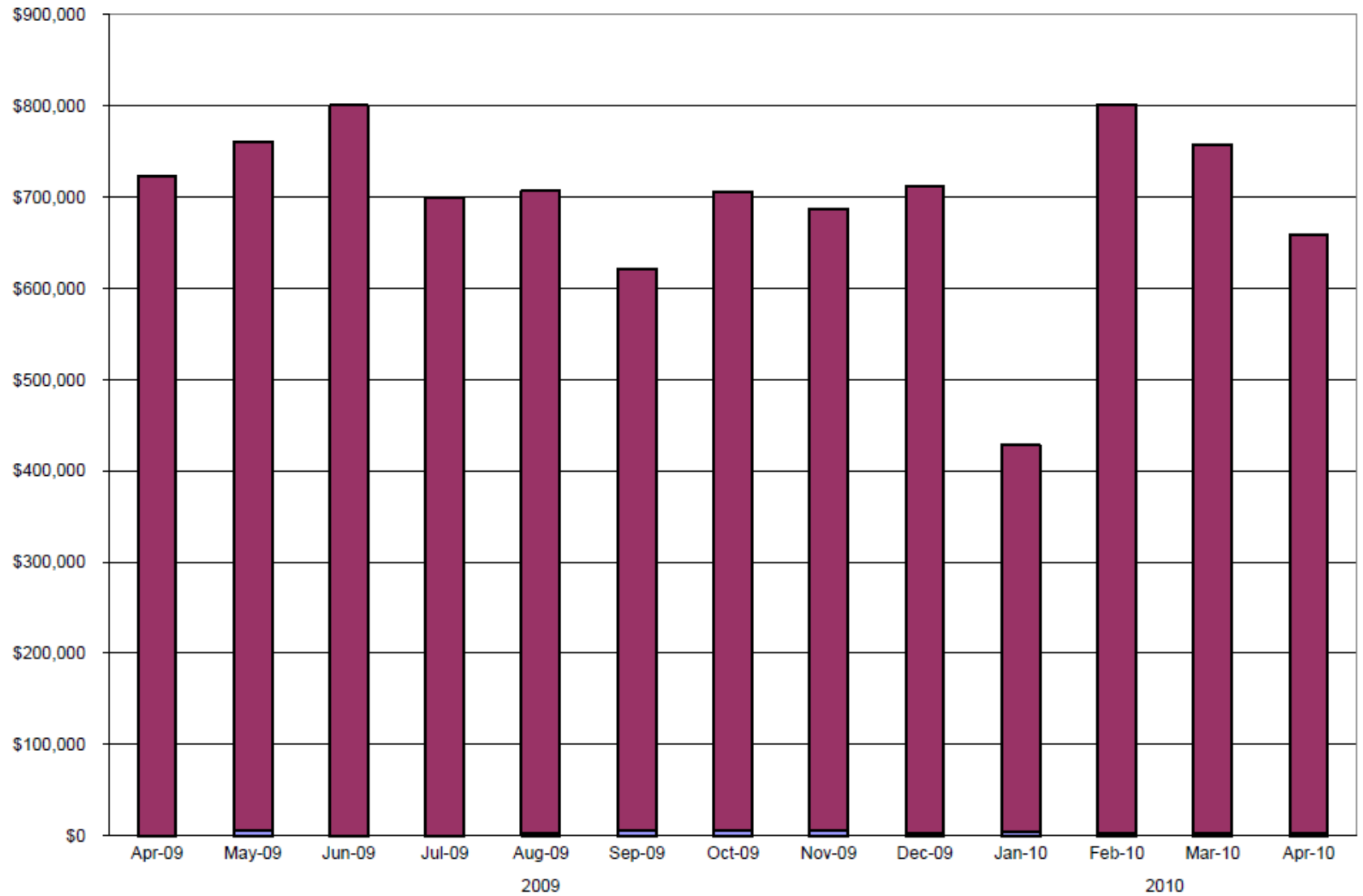


■ Gross Charges (per visit)	\$669	\$616	\$675	\$705	\$581	\$594	\$604	\$625	\$622	\$612	\$613	\$614	\$625
■ Payments (per visit)	\$209	\$236	\$271	\$268	\$236	\$188	\$216	\$221	\$222	\$180	\$222	\$197	\$238
▲ Number of Patient Visits	1,941	1,816	1,669	1,397	1,692	1,846	1,800	1,599	1,670	1,465	1,644	2,083	1,492

Physician Practice, USA  
Payments Per Deposit Day (DOE)  
(With 3-month moving average trendline)

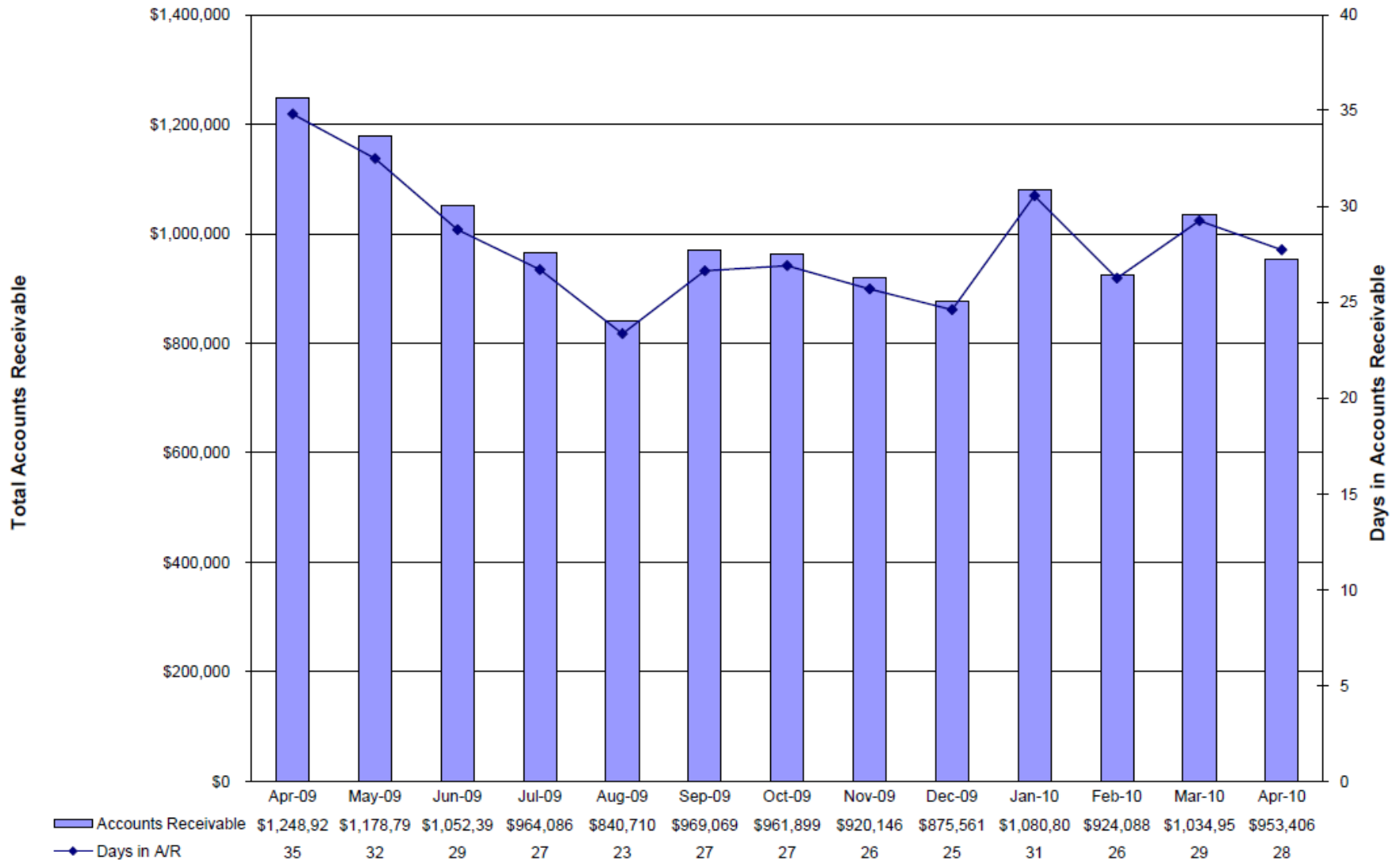


### Physician Practice, USA Total Adjustments (DOE)



■ Non-Collectible Adjustments	\$722,520	\$755,535	\$800,161	\$699,039	\$704,584	\$615,499	\$700,261	\$681,660	\$710,390	\$424,605	\$797,167	\$754,570	\$656,610
■ Collectible Adjustments	(\$144)	\$5,222	\$394	(\$67)	\$2,352	\$6,207	\$5,838	\$5,499	\$1,908	\$3,695	\$3,465	\$3,061	\$2,439

### Physician Practice, USA Accounts Receivable (DOE)



Note: Days in A/R are calculated as follows:  
 $\text{Ending A/R (DOE)} / \text{Rolling 12-Month Average Charges (DOE)} * 365 / 12.$

Source: Medical Group Management Association  
 Days gross fee for service charges in AR 45 days.

**Physician Practice, USA**  
**Accounts Receivable By Financial Class and Department (DOE)**

Financial Class	Sep-09	Oct-09	Nov-09	Dec-09	Jan-10	Feb-10	Mar-10	Apr-10
Aetna	\$30,826	\$27,007	\$23,720	\$25,492	\$26,317	\$38,885	\$32,432	\$21,381
Affinity	\$30,263	\$32,519	\$38,295	\$28,510	\$30,240	\$29,459	\$25,644	\$27,342
Alameda	\$39,893	\$43,899	\$58,957	\$59,597	\$49,243	\$51,493	\$61,442	\$80,122
Alta Bates	\$1,482	\$2,372	\$1,657	\$2,967	\$1,083	\$6,024	\$16,406	\$10,999
Blue Cross	\$106,977	\$97,594	\$131,722	\$121,663	\$107,934	\$103,263	\$114,560	\$92,110
Blue Shield	\$53,171	\$62,764	\$37,781	\$49,526	\$48,441	\$44,182	\$26,314	\$25,905
Cigna	\$17,886	\$14,853	\$10,337	\$5,117	\$10,845	\$14,786	\$11,168	\$8,381
Commercial	\$216,045	\$213,793	\$219,882	\$214,240	\$213,635	\$218,025	\$286,542	\$235,021
Healthnet	\$3,498	\$5,397	\$2,766	\$11,093	\$4,697	\$9,625	\$4,203	\$1,523
HP	\$107,889	\$121,728	\$112,663	\$85,875	\$62,451	\$114,113	\$92,924	\$111,596
Humana	\$1,306	\$244	\$80	\$980	\$262	\$55	\$110	\$222
JM	\$0	\$0	\$0	\$0	\$0	\$0	\$0	\$0
Kaiser	\$3,874	\$570	\$570	\$219	\$2,626	\$1,422	\$2,962	\$2,257
Medicaid	\$29,539	\$30,735	\$30,404	\$26,679	\$22,619	\$30,413	\$22,663	\$21,219
Medicare	\$290,902	\$264,152	\$220,777	\$209,777	\$466,362	\$221,733	\$298,472	\$281,094
Private Pay	\$2,171	\$2,856	\$1,887	\$776	\$722	\$732	\$487	\$462
EB	\$7,171	\$3,780	\$5,381	\$5,762	\$5,200	\$6,281	\$5,415	\$9,316
TriCare	\$2,314	\$4,691	\$2,153	\$2,127	\$992	\$3,521	\$7,497	\$3,759
United Healthcare	\$22,636	\$31,719	\$21,114	\$25,161	\$27,139	\$30,075	\$25,716	\$20,695
Workers Comp	\$1,225	\$1,225	\$0	\$0	\$0	\$0	\$0	\$0
<b>Grand Total</b>	<b>\$969,069</b>	<b>\$961,899</b>	<b>\$920,146</b>	<b>\$875,561</b>	<b>\$1,080,809</b>	<b>\$924,088</b>	<b>\$1,034,958</b>	<b>\$953,406</b>

Department	Sep-09	Oct-09	Nov-09	Dec-09	Jan-10	Feb-10	Mar-10	Apr-10
**No Department	(\$3,020)	(\$1,640)	(\$230)	\$128	(\$1,497)	(\$1,396)	(\$1,901)	(\$1,144)
Consultations	\$149,424	\$147,595	\$128,443	\$121,409	\$118,898	\$91,161	\$108,204	\$80,656
Hospital	\$34,856	\$27,586	\$31,699	\$27,827	\$43,815	\$42,389	\$49,091	\$43,012
Injections	\$6,186	\$5,550	\$5,230	\$5,182	\$4,894	\$2,030	\$2,030	\$0
Laboratory	\$3,759	\$2,979	\$2,816	\$1,452	\$1,206	\$2,025	\$2,485	\$2,370
Misc E/M	\$391	\$575	\$300	\$228	\$200	\$178	\$528	\$550
Misc Medicine	\$29,697	\$21,568	\$16,673	\$20,279	\$41,225	\$30,789	\$30,397	\$39,486
Office Visits Est Patient	\$51,389	\$54,593	\$49,691	\$45,956	\$62,267	\$52,118	\$68,904	\$66,239
Office Visits New Patient	\$17,911	\$23,016	\$17,481	\$13,205	\$46,395	\$46,317	\$53,687	\$49,213
Radiology	\$1,008	\$913	\$104	\$20	\$515	\$287	\$459	\$28
Surgery	\$677,469	\$679,165	\$667,939	\$639,875	\$762,890	\$658,190	\$721,074	\$672,997
<b>Grand Total</b>	<b>\$969,069</b>	<b>\$961,899</b>	<b>\$920,146</b>	<b>\$875,561</b>	<b>\$1,080,809</b>	<b>\$924,088</b>	<b>\$1,034,958</b>	<b>\$953,406</b>

Physician Practice, USA  
Accounts Receivable Aging by Provider by Financial Class (DOE)

Doctor Name	Financial Class	Apr-09	May-09	Jun-09	Jul-09	Aug-09	Sep-09	Oct-09	Nov-09	Dec-09	Jan-10	Feb-10	Mar-10	Apr-10
Doctor Name	Aetna	\$1,970	\$4,668	\$5,710	\$8,208	\$1,378	\$2,527	\$8,877	\$5,243	\$4,952	\$5,720	\$4,548	\$7,227	\$5,054
	Affinity	\$13,737	\$14,688	\$11,174	\$14,471	\$12,757	\$8,748	\$8,360	\$10,929	\$7,456	\$14,497	\$12,138	\$8,180	\$5,451
	Alameda	\$5,283	\$4,089	\$6,897	\$4,381	\$581	\$946	\$124	\$4,619	\$7,516	\$4,129	\$2,243	\$7,003	\$10,200
	AB	\$0	\$493	\$0	\$0	\$0	\$0	\$0	\$0	\$0	\$0	\$546	\$546	\$142
	Blue Cross	\$28,321	\$16,557	\$20,620	\$10,083	\$6,521	\$19,031	\$12,836	\$22,035	\$19,648	\$19,586	\$16,025	\$16,428	\$14,861
	Blue Shield	\$9,845	\$11,723	\$12,302	\$9,941	\$4,562	\$10,650	\$11,377	\$4,598	\$5,369	\$3,324	\$4,628	\$1,311	\$1,556
	Cigna	\$4,661	\$6,240	\$4,031	\$8,308	\$3,961	\$7,303	\$2,512	\$1,011	\$2,053	\$1,735	\$2,773	\$2,062	\$1,157
	Commercial	\$43,477	\$24,587	\$19,234	\$21,977	\$11,668	\$18,060	\$31,075	\$30,499	\$23,196	\$28,815	\$26,868	\$29,781	\$22,427
	Healthnet	\$1,456	\$990	\$2,411	\$581	\$308	\$410	\$1,228	\$0	\$1,667	\$896	\$2,673	\$230	\$157
	HP	\$10,312	\$11,966	\$11,115	\$17,866	\$1,118	\$14,669	\$18,101	\$15,113	\$6,918	\$5,656	\$9,201	\$5,385	\$13,747
	Humana	\$0	\$0	\$0	\$0	\$0	\$0	\$0	\$0	\$0	\$0	\$0	\$0	\$0
	Jm	\$0	\$0	\$0	\$0	\$0	\$0	\$0	\$0	\$0	\$0	\$0	\$0	\$0
	Kaiser	\$0	\$2,498	\$0	\$0	\$0	\$0	\$0	\$0	\$0	\$0	\$0	\$0	\$0
	Medicaid	\$13,957	\$10,066	\$8,540	\$13,999	\$9,389	\$8,972	\$7,802	\$7,897	\$6,485	\$5,437	\$6,104	\$4,507	\$4,060
	Medicare	\$34,354	\$37,918	\$39,248	\$31,785	\$8,089	\$32,272	\$27,705	\$33,631	\$20,734	\$46,611	\$40,702	\$31,209	\$40,792
	Private Pay	\$600	\$701	\$404	\$0	\$809	\$0	\$0	\$0	\$0	\$0	\$0	\$0	\$0
	EB	\$0	\$927	\$0	\$0	\$0	\$0	\$0	\$0	\$0	\$0	\$2,185	\$2,043	\$2,043
	TriCare	\$419	\$419	\$0	\$0	\$0	\$0	\$0	\$0	\$0	\$419	\$419	\$2,351	\$2,535
	United Healthcare	\$4,574	\$3,170	\$4,332	\$1,835	\$300	\$3,332	\$3,574	\$5,236	\$7,299	\$2,135	\$1,638	\$4,153	\$2,708
Doctor Name Total		\$172,966	\$151,670	\$146,018	\$141,414	\$81,440	\$126,950	\$131,371	\$140,811	\$113,293	\$139,280	\$132,691	\$122,397	\$126,889
Doctor Name	Aetna	\$1,032	\$420	\$1,828	\$2,028	\$3,521	\$3,987	\$1,255	\$2,171	\$5,686	\$5,333	\$6,197	\$3,644	\$3,842
	Affinity	\$2,714	\$4,747	\$4,617	\$5,168	\$1,098	\$274	\$1,248	\$1,248	\$3,295	\$1,248	\$2,610	\$3,912	\$6,299
	Alameda	\$12,270	\$14,144	\$4,279	\$1,173	\$5,499	\$4,052	\$6,175	\$6,170	\$6,536	\$3,918	\$6,229	\$8,978	\$14,836
	AB	\$116	\$116	\$116	\$126	\$10	\$288	\$1,083	\$288	\$0	\$0	\$25	\$2,104	\$2,010
	Blue Cross	\$11,829	\$8,722	\$7,032	\$3,482	\$7,050	\$7,375	\$10,738	\$14,333	\$19,124	\$7,731	\$10,977	\$13,828	\$14,584
	Blue Shield	\$4,466	\$3,615	\$3,952	\$2,801	\$3,663	\$4,502	\$4,021	\$1,906	\$1,265	\$2,565	\$5,661	\$1,646	\$1,042
	Cigna	\$2,693	\$3,966	\$2,170	\$2,268	\$4,166	\$1,623	\$1,542	\$346	\$544	\$411	\$974	\$1,085	\$625
	Commercial	\$31,601	\$24,796	\$20,279	\$18,370	\$30,740	\$28,345	\$14,833	\$15,065	\$17,329	\$17,466	\$26,106	\$35,403	\$34,593
	Healthnet	\$86	\$0	\$0	\$288	\$930	\$269	\$303	\$49	\$157	\$30	\$284	\$30	\$375
	HP	\$18,247	\$23,594	\$12,131	\$1,560	\$14,179	\$13,162	\$18,870	\$11,828	\$13,553	\$9,002	\$17,481	\$8,870	\$15,033
	Humana	\$0	\$253	\$897	\$50	\$50	\$1,112	\$192	\$80	\$80	\$50	\$50	\$75	\$187
	Kaiser	\$0	\$0	\$0	\$1,426	\$1,426	\$0	\$0	\$0	\$0	\$661	\$568	\$568	\$669
	Medicaid	\$8,842	\$3,441	\$2,013	\$1,682	\$2,456	\$4,443	\$4,049	\$1,873	\$5,523	\$2,101	\$4,432	\$2,239	\$2,262
	Medicare	\$49,081	\$34,527	\$28,840	\$7,429	\$20,891	\$22,293	\$25,218	\$22,786	\$29,426	\$56,613	\$21,824	\$44,857	\$47,203
	Private Pay	\$807	\$807	\$807	\$666	\$870	\$646	\$14	\$0	\$0	(\$95)	\$0	\$0	\$0
	TriCare	\$11	\$153	\$164	\$22	\$0	\$911	\$299	\$52	\$165	\$308	\$296	\$3,291	\$515
	United Healthcare	\$267	\$270	\$1,341	\$284	\$671	\$301	\$3,273	\$417	\$1,408	\$2,072	\$4,820	\$4,633	\$1,025
Doctor Name Total		\$144,062	\$124,321	\$90,266	\$49,066	\$97,219	\$94,643	\$93,111	\$78,712	\$105,538	\$110,975	\$110,023	\$135,163	\$145,467
<b>Grand Total</b>		<b>\$1,248,922</b>	<b>\$1,178,798</b>	<b>\$1,052,397</b>	<b>\$964,086</b>	<b>\$840,710</b>	<b>\$969,069</b>	<b>\$961,899</b>	<b>\$920,146</b>	<b>\$875,561</b>	<b>\$1,080,809</b>	<b>\$924,088</b>	<b>\$1,034,958</b>	<b>\$953,406</b>

**Physician Practice, USA**  
**Accounts Receivable Aging by Financial Class (DOE)**

Financial Class		Deposit	0 - 30	31-60	61-90	91-120	120+	Total
Aetna	Patient	(\$15.00)	\$989.03	\$1,864.71	\$460.57	\$184.84	\$681.24	\$4,165.39
	%	(0.36)	23.74	44.77	11.06	4.44	16.35	6.05
	Insurance	\$0.00	\$17,516.85	\$0.00	\$35.00	\$0.00	(\$336.13)	\$17,215.72
	%	0.00	101.75	0.00	0.20	0.00	(1.95)	1.95
	<b>Total</b>	<b>(\$15.00)</b>	<b>\$18,505.88</b>	<b>\$1,864.71</b>	<b>\$495.57</b>	<b>\$184.84</b>	<b>\$345.11</b>	<b>\$21,381.11</b>
	%	(0.07)	86.55	8.72	2.32	0.86	1.61	2.24
Blue Cross	Patient	(\$459.60)	\$8,844.39	\$5,869.51	\$6,949.60	\$2,404.81	\$4,087.71	\$27,696.42
	%	(1.66)	31.93	21.19	25.09	8.68	14.76	40.26
	Insurance	\$0.00	\$54,968.30	\$3,483.38	\$1,502.68	\$2,674.88	\$1,784.68	\$64,413.92
	%	0.00	85.34	5.41	2.33	4.15	2.77	7.28
	<b>Total</b>	<b>(\$459.60)</b>	<b>\$63,812.69</b>	<b>\$9,352.89</b>	<b>\$8,452.28</b>	<b>\$5,079.69</b>	<b>\$5,872.39</b>	<b>\$92,110.34</b>
	%	(0.50)	69.28	10.15	9.18	5.51	6.38	9.66
Kaiser	Patient	\$0.00	\$0.00	\$0.00	\$0.00	\$0.00	\$0.00	\$0.00
	%	0.00	0.00	0.00	0.00	0.00	0.00	0.00
	Insurance	\$0.00	\$2,038.00	\$0.00	\$0.00	\$0.00	\$218.75	\$2,256.75
	%	0.00	90.31	0.00	0.00	0.00	9.69	0.26
	<b>Total</b>	<b>\$0.00</b>	<b>\$2,038.00</b>	<b>\$0.00</b>	<b>\$0.00</b>	<b>\$0.00</b>	<b>\$218.75</b>	<b>\$2,256.75</b>
	%	0.00	90.31	0.00	0.00	0.00	9.69	0.24
United Healthcare	Patient	(\$135.00)	\$1,314.39	\$1,263.34	\$197.04	\$288.60	\$904.79	\$3,833.16
	%	(3.52)	34.29	32.96	5.14	7.53	23.60	5.57
	Insurance	\$0.00	\$16,116.63	\$184.38	\$0.00	\$0.00	\$561.00	\$16,862.01
	%	0.00	95.58	1.09	0.00	0.00	3.33	1.91
	<b>Total</b>	<b>(\$135.00)</b>	<b>\$17,431.02</b>	<b>\$1,447.72</b>	<b>\$197.04</b>	<b>\$288.60</b>	<b>\$1,465.79</b>	<b>\$20,695.17</b>
	%	(0.65)	84.23	7.00	0.95	1.39	7.08	2.17
<b>Patient Total</b>		<b>(\$1,962.59)</b>	<b>\$19,368.17</b>	<b>\$13,099.32</b>	<b>\$17,039.14</b>	<b>\$5,092.67</b>	<b>\$16,161.15</b>	<b>\$68,797.86</b>
	%	(2.85)	28.15	19.04	24.77	7.40	23.49	7.22
<b>Insurance Total</b>		<b>\$0.00</b>	<b>\$657,779.36</b>	<b>\$140,549.08</b>	<b>\$45,095.06</b>	<b>\$15,208.98</b>	<b>\$25,975.25</b>	<b>\$884,607.73</b>
	%	0.00	74.36	15.89	5.10	1.72	2.94	92.78
<b>Total</b>		<b>(\$1,962.59)</b>	<b>\$677,147.53</b>	<b>\$153,648.40</b>	<b>\$62,134.20</b>	<b>\$20,301.65</b>	<b>\$42,136.40</b>	<b>\$953,405.59</b>
	%	(0.21)	71.02	16.12	6.52	2.13	4.42	

**Physician Practice, USA**  
**Reimbursement Summary by Financial Class and Department (DOE) - 12 Months**

Financial Class	Total Charges	Collectible Adjustments	Non-Collectible Adjustments	Total Adjustments	Patient Payments	Insurance Payments	Total Payments	Gross Collection %	Net Collection %
Aetna	\$327,679	\$681	\$195,035	\$195,716	\$21,255	\$102,101	\$123,356	39%	99%
Affinity	\$153,099	\$24	\$94,698	\$94,722	\$2,027	\$69,533	\$71,560	43%	100%
AL	\$437,500	\$43	\$314,642	\$314,686	\$1,322	\$116,161	\$117,483	27%	100%
AB	\$33,770	(\$54)	\$18,064	\$18,010	\$427	\$8,675	\$9,102	34%	100%
Blue Cross	\$1,767,892	\$10,224	\$1,107,861	\$1,118,085	\$182,639	\$528,944	\$711,583	39%	99%
Blue Shield	\$698,861	\$2,962	\$484,793	\$487,755	\$90,912	\$154,555	\$245,467	33%	99%
Cigna	\$197,071	\$981	\$138,022	\$139,003	\$12,382	\$56,758	\$69,140	33%	99%
Commercial	\$1,565,363	\$10,235	\$991,486	\$1,001,722	\$35,892	\$576,489	\$612,381	38%	98%
Healthnet	\$87,324	\$685	\$62,724	\$63,409	\$11,419	\$22,192	\$33,610	35%	98%
HP	\$2,299,724	\$621	\$1,294,670	\$1,295,291	\$36,657	\$1,002,349	\$1,039,006	45%	100%
Humana	\$13,612	\$80	\$9,523	\$9,602	\$352	\$3,465	\$3,818	28%	98%
Kaiser	\$17,061	(\$4)	\$10,898	\$10,894	\$0	\$12,691	\$12,691	54%	100%
Medicaid	\$173,291	\$5,586	\$149,029	\$154,615	\$343	\$50,825	\$51,168	25%	90%
Medicare	\$4,205,674	\$4,925	\$3,071,846	\$3,076,771	\$27,889	\$1,158,639	\$1,186,529	28%	100%
Private Pay	\$35,735	\$2,265	\$10,752	\$13,018	\$21,703	\$3,712	\$25,415	66%	92%
EB	\$32,387	\$0	\$13,219	\$13,219	\$30	\$14,940	\$14,970	53%	100%
TriCare	\$57,932	\$160	\$42,609	\$42,769	\$187	\$13,492	\$13,679	24%	99%
United Healthcare	\$444,194	\$598	\$289,506	\$290,104	\$22,846	\$140,491	\$163,337	36%	100%
Workers Comp	\$1,225	\$0	\$704	\$704	\$0	\$521	\$521	42%	100%
<b>Grand Total</b>	<b>\$12,549,394</b>	<b>\$40,014</b>	<b>\$8,300,081</b>	<b>\$8,340,095</b>	<b>\$468,280</b>	<b>\$4,036,535</b>	<b>\$4,504,815</b>	<b>35%</b>	<b>99%</b>

Department	Total Charges	Collectible Adjustments	Non-Collectible Adjustments	Total Adjustments	Patient Payments	Insurance Payments	Total Payments	Gross Collection %	Net Collection %
**No Department	\$500	\$0	\$215	\$215	(\$30)	\$0	(\$30)	-16%	100%
Consultations	\$1,567,457	\$6,249	\$923,373	\$929,622	\$93,137	\$672,741	\$765,877	45%	99%
Hospital	\$346,830	\$1,820	\$192,588	\$194,408	\$2,688	\$150,965	\$153,652	44%	99%
Injections	\$102,110	\$3,001	\$58,397	\$61,398	\$8,937	\$73,261	\$82,198	57%	96%
Laboratory	\$35,269	\$270	\$19,628	\$19,898	\$1,937	\$12,068	\$14,005	41%	98%
Misc E/M	\$1,734	\$135	\$521	\$656	\$240	\$491	\$731	53%	84%
Misc Medicine	\$272,549	\$562	\$181,737	\$182,300	\$8,696	\$80,111	\$88,807	33%	99%
Office Visits Est Patient	\$802,609	\$621	\$452,268	\$452,889	\$59,398	\$290,493	\$349,891	44%	100%
Office Visits New Patient	\$401,968	(\$121)	\$185,107	\$184,985	\$34,660	\$142,037	\$176,698	49%	100%
Radiology	\$3,015	\$0	\$2,929	\$2,929	\$0	\$654	\$654	18%	100%
Surgery	\$9,015,353	\$27,476	\$6,283,318	\$6,310,794	\$258,618	\$2,613,715	\$2,872,333	31%	99%
<b>Grand Total</b>	<b>\$12,549,394</b>	<b>\$40,014</b>	<b>\$8,300,081</b>	<b>\$8,340,095</b>	<b>\$468,280</b>	<b>\$4,036,535</b>	<b>\$4,504,815</b>	<b>35%</b>	<b>99%</b>

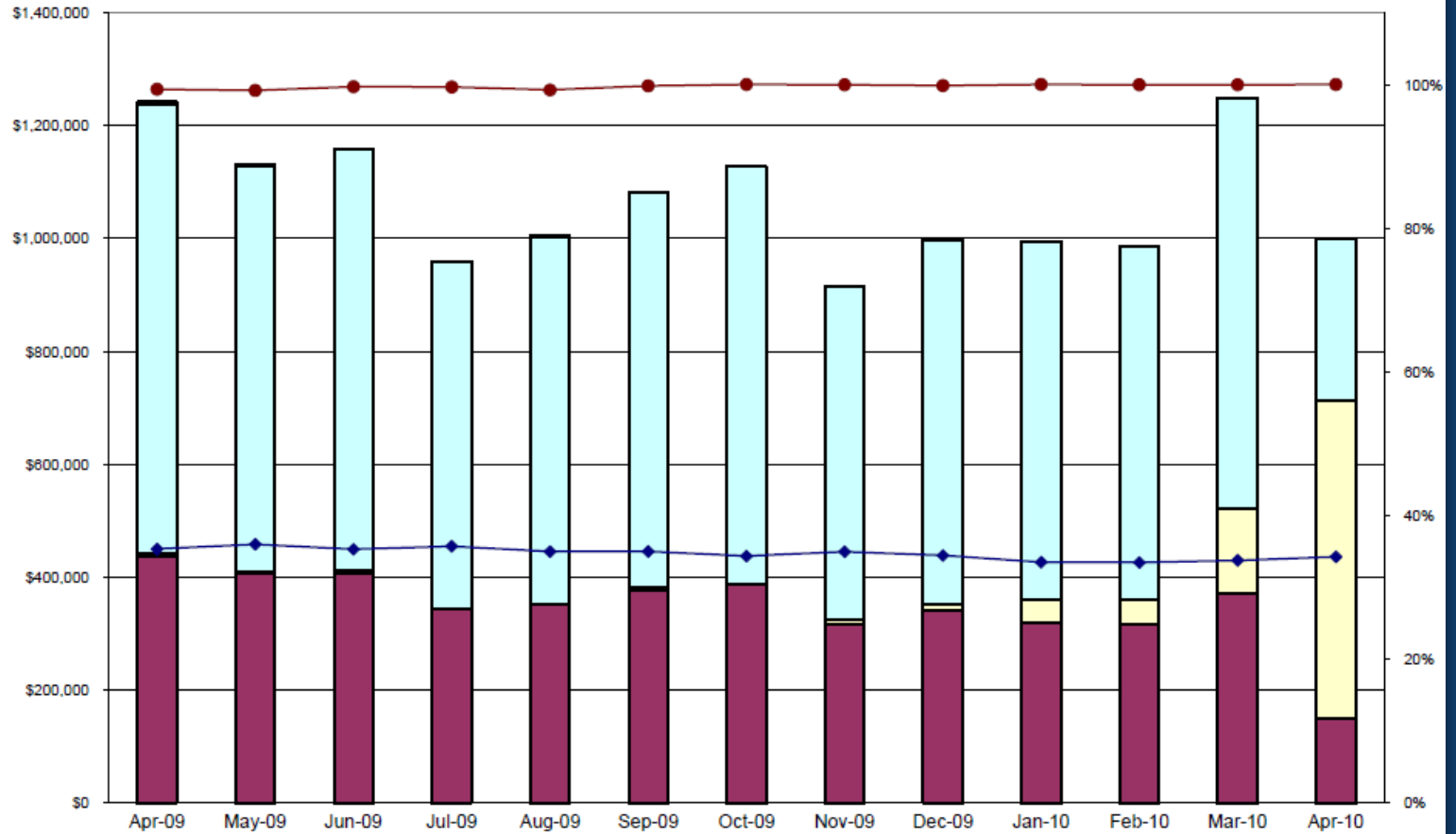
**Physician Practice, USA**  
**Charges and Procedures by Provider and Department (DOE)**

Doctor Name	Department	Data	Sep-09	Oct-09	Nov-09	Dec-09	Jan-10	Feb-10	Mar-10	Apr-10	YTD Total 2010	12-Month Average
Doctor Name	**No Department	Num Procs	0	0	0	0	0	0	0	0	0	0
		Total Chrg	\$0	\$0	\$0	\$0	\$0	\$0	\$0	\$0	\$0	\$0
		Total Pmnt	(\$63)	(\$160)	(\$30)	(\$80)	\$80	\$95	(\$31)	(\$64)	\$80	(\$16)
	Consultations	Num Procs	65	56	43	46	31	36	32	19	118	40
		Total Chrg	\$26,883	\$22,656	\$16,798	\$19,143	\$12,187	\$14,414	\$12,779	\$7,762	\$47,142	\$16,084
		Total Pmnt	\$7,879	\$10,039	\$7,174	\$11,301	\$5,650	\$6,435	\$7,263	\$5,399	\$24,747	\$8,341
	Hospital	Num Procs	14	0	41	0	0	28	2	26	56	14
		Total Chrg	\$1,846	\$0	\$5,760	\$0	\$0	\$5,216	\$408	\$4,358	\$9,982	\$2,140
		Total Pmnt	(\$70)	\$522	\$261	\$2,057	\$55	\$292	\$2,143	\$147	\$2,637	\$767
	Laboratory	Num Procs	2	2	2	0		2	2	2	6	2
		Total Chrg	\$230	\$154	\$230	\$0		\$230	\$230	\$230	\$690	\$202
		Total Pmnt	\$104	\$394	\$0	\$121		\$0	\$108	\$130	\$238	\$94
	Misc Medicine	Num Procs	8	4	1	3	3	10	7	9	29	5
		Total Chrg	\$15,250	\$8,530	\$2,535	\$3,485	\$7,605	\$19,795	\$15,235	\$17,085	\$59,720	\$9,532
		Total Pmnt	\$3,038	\$6,174	\$2,649	\$2,318	\$45	\$4,120	\$9,497	\$4,404	\$18,066	\$3,739
	Office Visits Est Pt	Num Procs	31	29	29	24	31	35	45	27	138	29
		Total Chrg	\$4,968	\$4,570	\$4,694	\$3,840	\$5,123	\$5,278	\$7,110	\$4,195	\$21,706	\$4,499
		Total Pmnt	\$1,381	\$1,960	\$1,912	\$1,871	\$1,689	\$2,081	\$3,472	\$2,392	\$9,635	\$2,088
	Office Visits New P	Num Procs	21	20	11	18	36	17	41	15	109	22
		Total Chrg	\$5,895	\$4,920	\$2,733	\$3,442	\$10,541	\$5,003	\$12,041	\$4,581	\$32,166	\$5,774
		Total Pmnt	\$1,630	\$2,630	\$1,634	\$2,041	\$1,905	\$3,452	\$5,711	\$3,565	\$14,634	\$2,749
	Surgery	Num Procs	88	119	98	92	86	86	104	91	367	90
		Total Chrg	\$85,268	\$114,861	\$89,582	\$91,335	\$84,707	\$80,554	\$97,987	\$86,727	\$349,975	\$85,909
		Total Pmnt	\$16,794	\$35,326	\$25,893	\$33,329	\$26,106	\$26,695	\$32,852	\$26,399	\$112,052	\$28,859
<b>Doctor Name Num Procs</b>			229	230	225	183	187	214	233	189	823	201
<b>Doctor Name Total Chrg</b>			\$140,340	\$155,691	\$122,332	\$121,245	\$120,163	\$130,490	\$145,790	\$124,938	\$521,381	\$124,124
<b>Doctor Name Total Pmnt</b>			\$30,693	\$56,885	\$39,493	\$52,958	\$35,531	\$43,169	\$61,016	\$42,373	\$182,088	\$46,612
<b>Doctor Name Num Procs</b>			273	262	245	342	240	313	370	341	1,264	278
<b>Doctor Name Total Chrg</b>			\$107,453	\$109,647	\$107,690	\$140,004	\$86,881	\$124,783	\$181,955	\$148,733	\$542,352	\$117,152
<b>Doctor Name Total Pmnt</b>			\$39,027	\$41,207	\$41,771	\$39,309	\$32,479	\$40,351	\$55,053	\$46,893	\$174,776	\$41,530

**Physician Practice, USA**  
**Charges and Procedures by Department and Facility (DOE)**

Doctor Name	Department	Facility Name	Data	Sep-09	Oct-09	Nov-09	Dec-09	Jan-10	Feb-10	Mar-10	Apr-10	YTD Total 2010	12-Month Average
Doctor Name	**No Department	Facility Name	Num Procs									0	0
			Total Chrg	\$0	\$0	\$0	\$0	\$0	\$225	\$25	\$0	\$250	\$21
	Consultations	Facility Name	Num Procs	44	35	41	56	43	48	34	43	168	45
			Total Chrg	\$13,327	\$10,457	\$11,749	\$16,295	\$12,384	\$13,468	\$10,630	\$12,070	\$48,552	\$12,976
			Total Pmnt	\$7,675	\$6,147	\$5,710	\$6,061	\$5,484	\$7,168	\$5,119	\$5,543	\$23,313	\$6,193
		Facility Name	Num Procs	15	10	4	11	3	4	6	8	21	7
			Total Chrg	\$3,888	\$2,430	\$972	\$2,430	\$729	\$972	\$1,701	\$1,701	\$5,103	\$1,681
			Total Pmnt	\$886	\$1,191	\$833	\$535	\$606	\$633	\$486	\$250	\$1,975	\$730
	Consultations Num Procs			59	45	45	67	46	52	40	51	189	52
	Consultations Total Chrg			\$17,215	\$12,887	\$12,721	\$18,725	\$13,113	\$14,440	\$12,331	\$13,771	\$53,655	\$14,656
	Consultations Total Pmnt			\$8,561	\$7,337	\$6,543	\$6,596	\$6,090	\$7,801	\$5,604	\$5,793	\$25,288	\$6,923
	Hospital	Facility Name	Num Procs									0	1
			Total Chrg									\$0	\$370
			Total Pmnt									\$0	\$196
		Facility Name	Num Procs	58	21	17	38	18	40	34	48	140	28
			Total Chrg	\$8,622	\$2,830	\$2,536	\$5,396	\$2,897	\$6,052	\$5,261	\$7,232	\$21,442	\$4,183
			Total Pmnt	\$2,707	\$1,058	\$1,329	\$1,127	\$1,748	\$1,435	\$2,911	\$2,359	\$8,454	\$1,691
	Hospital Num Procs			58	21	17	38	18	40	34	48	140	28
	Hospital Total Chrg			\$8,622	\$2,830	\$2,536	\$5,396	\$2,897	\$6,052	\$5,261	\$7,232	\$21,442	\$4,214
	Hospital Total Pmnt			\$2,707	\$1,058	\$1,329	\$1,127	\$1,748	\$1,435	\$2,911	\$2,359	\$8,454	\$1,707
	Laboratory	Facility Name	Num Procs				2	0				0	1
			Total Chrg				\$230	\$0				\$0	\$115
			Total Pmnt				\$0	\$44				\$44	\$22
	Laboratory Num Procs						2	0				0	1
	Laboratory Total Chrg						\$230	\$0				\$0	\$115
	Laboratory Total Pmnt						\$0	\$44				\$44	\$22
	Office Visits Est Pt	Facility Name	Num Procs	79	106	95	115	99	100	113	102	414	98
			Total Chrg	\$11,435	\$14,953	\$13,805	\$16,242	\$14,068	\$14,065	\$16,304	\$14,928	\$59,365	\$13,980
			Total Pmnt	\$6,492	\$4,782	\$6,284	\$6,513	\$3,794	\$6,406	\$6,143	\$6,778	\$23,121	\$5,784
	Office Visits Est Pt Num Procs			79	106	95	115	99	100	113	102	414	98
	Office Visits Est Pt Total Chrg			\$11,435	\$14,953	\$13,805	\$16,242	\$14,068	\$14,065	\$16,304	\$14,928	\$59,365	\$13,980
	Office Visits Est Pt Total Pmnt			\$6,492	\$4,782	\$6,284	\$6,513	\$3,794	\$6,406	\$6,143	\$6,778	\$23,121	\$5,784
	Office Visits New Pt	Facility Name	Num Procs	1	2	3	8	18	23	21	21	83	8
			Total Chrg	\$219	\$438	\$657	\$1,752	\$4,050	\$4,897	\$4,745	\$4,599	\$18,291	\$1,816
			Total Pmnt	\$10	\$203	\$383	\$436	\$591	\$1,313	\$3,094	\$1,968	\$6,966	\$689
	Office Visits New Pt Num Procs			1	2	3	8	18	23	21	21	83	8
	Office Visits New Pt Total Chrg			\$219	\$438	\$657	\$1,752	\$4,050	\$4,897	\$4,745	\$4,599	\$18,291	\$1,816
	Office Visits New Pt Total Pmnt			\$10	\$203	\$383	\$436	\$591	\$1,313	\$3,094	\$1,968	\$6,966	\$689
	Surgery	Facility Name	Num Procs	0	2	0	2	0	2	2	0	4	1
			Total Chrg	\$0	\$630	\$0	\$725	\$0	\$630	\$725	\$0	\$1,355	\$278
			Total Pmnt	\$15	\$120	\$207	\$192	\$67	\$307	\$97	\$84	\$555	\$109
		Facility Name	Num Procs	51	68	75	86	42	70	123	93	328	71
			Total Chrg	\$48,701	\$64,824	\$70,886	\$78,246	\$37,700	\$65,442	\$114,537	\$85,843	\$303,522	\$66,136
			Total Pmnt	\$18,392	\$21,049	\$24,821	\$21,582	\$16,174	\$16,671	\$31,165	\$25,657	\$89,666	\$21,851
		Facility Name	Num Procs	19	8	2	11	8	6	13	11	38	9
			Total Chrg	\$15,668	\$5,225	\$2,218	\$7,368	\$6,302	\$4,934	\$9,921	\$10,206	\$31,363	\$6,980
			Total Pmnt	\$1,674	\$4,089	\$928	\$1,003	\$1,786	\$2,571	\$1,549	\$1,903	\$7,808	\$1,837
		Facility Name	Num Procs	6	8	4	5	7	12	16	9	44	8
			Total Chrg	\$5,593	\$5,985	\$2,648	\$4,815	\$5,976	\$11,248	\$12,531	\$6,579	\$36,334	\$6,342
			Total Pmnt	\$805	\$1,551	\$1,697	\$923	\$1,644	\$1,289	\$4,435	\$1,538	\$8,905	\$2,018
	Surgery Num Procs			76	86	81	104	57	90	154	113	414	88
	Surgery Total Chrg			\$69,962	\$76,664	\$75,752	\$91,154	\$49,978	\$82,254	\$137,714	\$102,628	\$372,574	\$79,737
	Surgery Total Pmnt			\$20,887	\$26,810	\$27,653	\$23,700	\$19,670	\$20,839	\$37,245	\$29,181	\$106,934	\$25,816
Doctor Name Num Procs				273	262	245	342	241	313	370	342	1,266	278
Doctor Name Total Chrg				\$107,453	\$109,647	\$107,690	\$140,004	\$86,881	\$124,783	\$181,955	\$148,733	\$542,352	\$117,152
Doctor Name Total Pmnt				\$39,027	\$41,207	\$41,771	\$39,309	\$32,479	\$40,351	\$55,053	\$46,893	\$174,776	\$41,530

### Physician Practice, USA Reimbursement Analysis - Total Clinic (DOS)

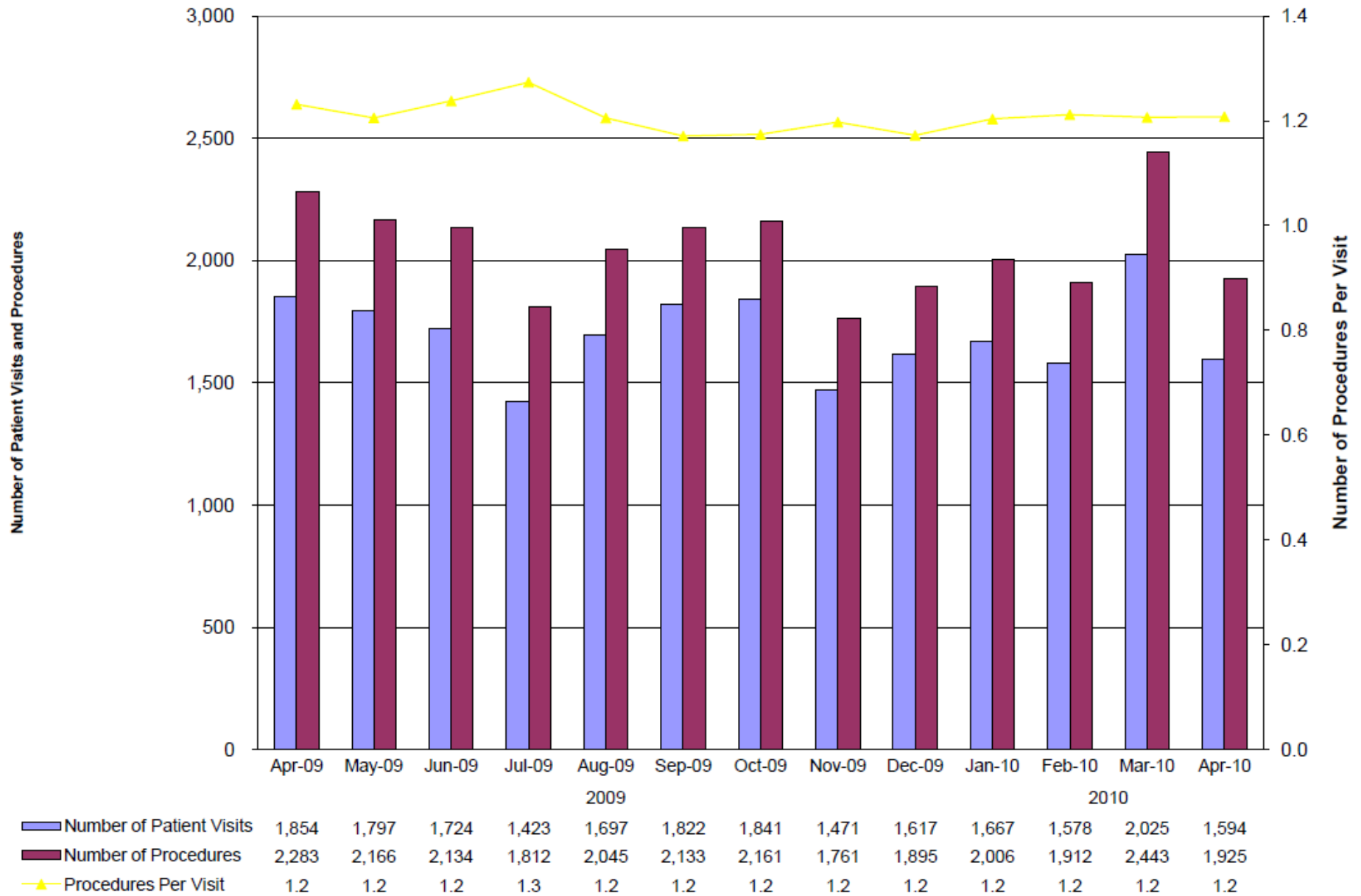


NOTE: Pmts and Adj are those associated with the Charge, not the date range.

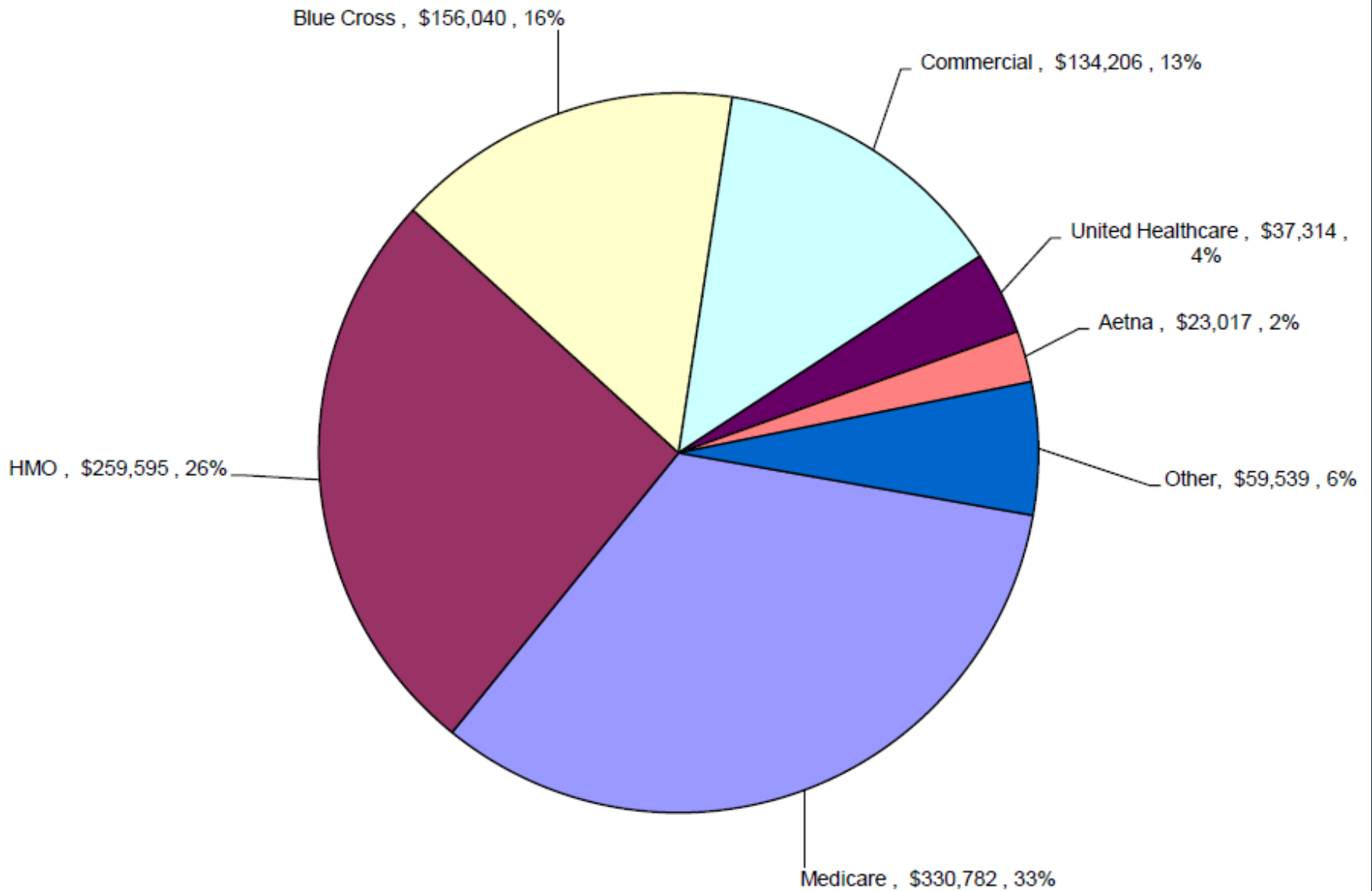
Resolved AR% = Total Pmts + Total Adj/Total Chgs

Gross Coll%=Total Pmts/Total Pmts+Total Adj  
Net Coll%=Total Pmts/Total Pmts+Coll Adj

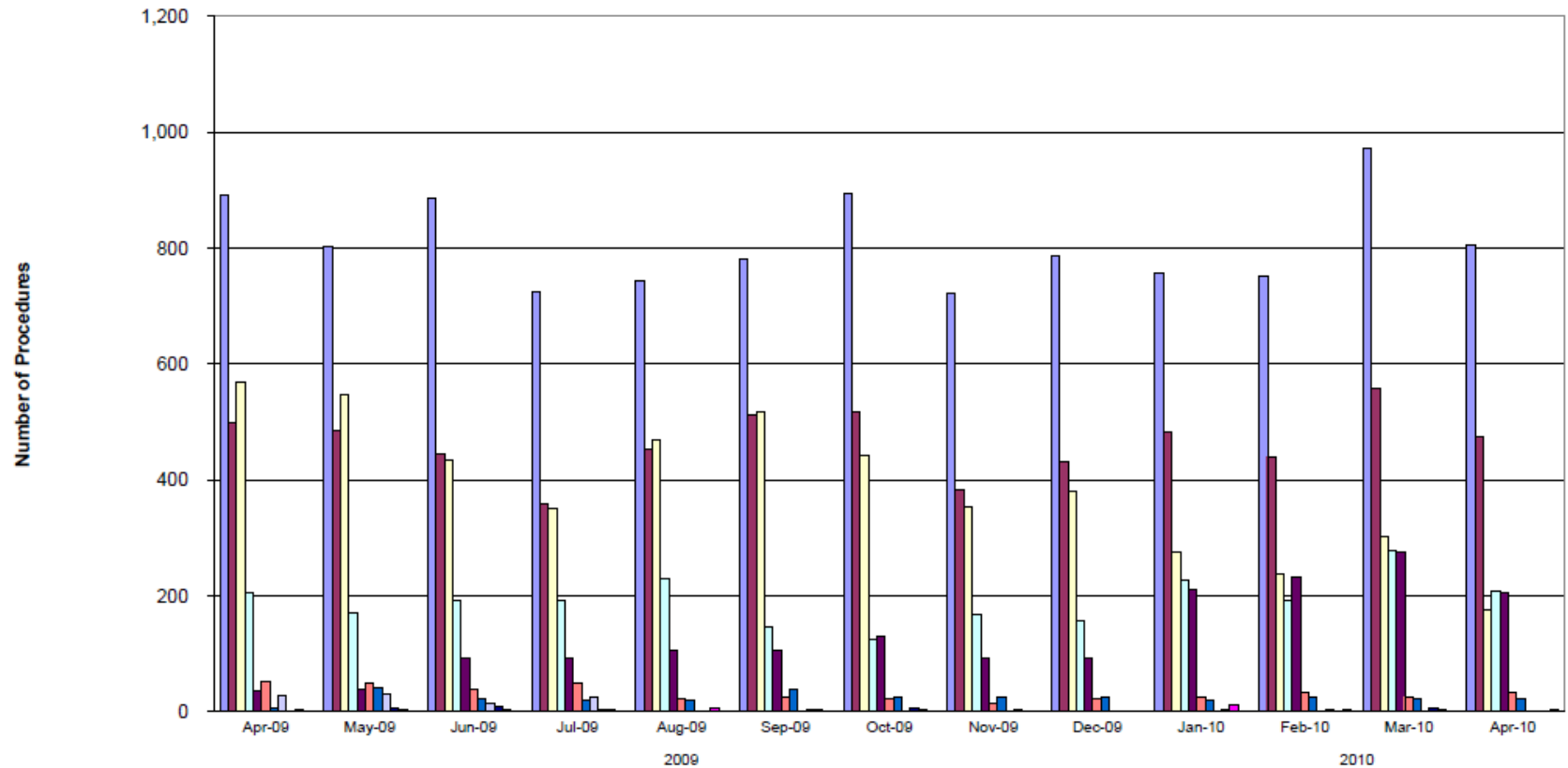
### Physician Practice, USA Visits and Procedures (DOS)



Physician Practice, USA  
Payer Mix - Current Month Charges (DOS)



### Physician Practice, USA Procedure Analysis by Department (DOS)



	2009						2010						
	Apr-09	May-09	Jun-09	Jul-09	Aug-09	Sep-09	Oct-09	Nov-09	Dec-09	Jan-10	Feb-10	Mar-10	Apr-10
■ Surgery	891	803	887	723	743	782	894	722	787	757	751	973	804
■ Office Visits Est Patient	498	484	445	358	453	513	518	383	431	483	439	557	474
□ Consultations	568	548	433	349	468	517	441	353	379	275	237	301	176
□ Hospital	204	170	190	191	229	147	125	168	157	226	192	278	208
■ Office Visits New Patient	35	37	93	93	106	106	129	93	92	211	231	275	206
■ Misc Medicine	51	48	39	50	21	24	21	14	21	24	32	26	33
■ Laboratory	8	40	22	20	18	38	26	26	26	18	24	22	22
□ Injections	27	29	14	24									
■ Misc E/M	1	5	7	2	1	4	5	2	1	2	3	6	
■ Radiology	2	2	4	2	6	2	2		1	10		4	
■ No Department	0	0	0	0	0	0	0	0	0	0	3	1	2

Note: This report only includes selected procedures.

**Physician Practice, USA**  
**Top 25 Diagnosis Codes (DOS)**

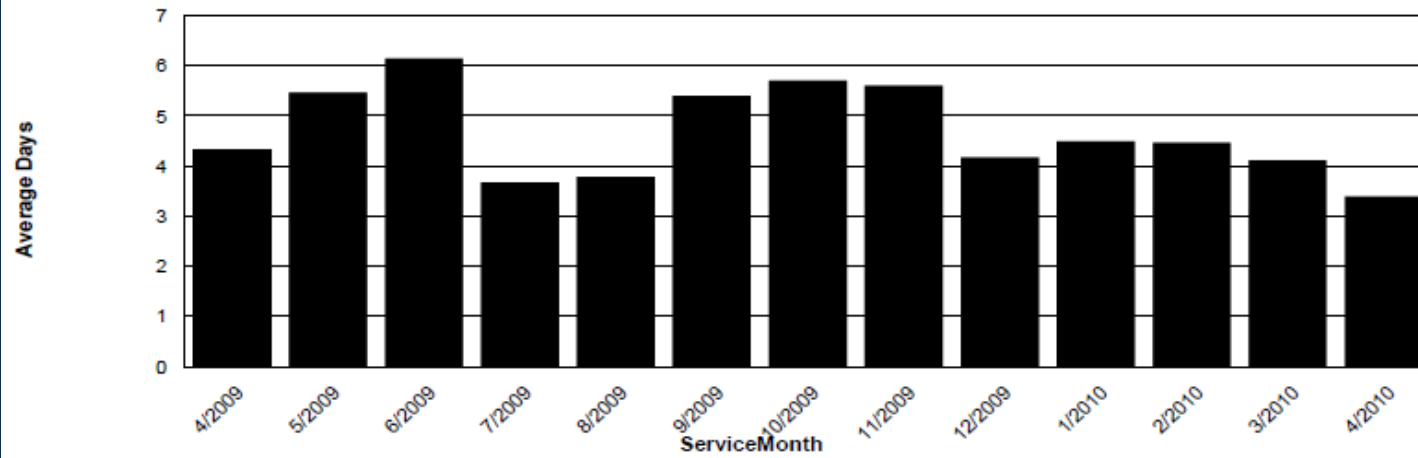
Diagnosis Code	Diagnosis Description	Doctor Name	Aug-09	Sep-09	Oct-09	Nov-09	Dec-09	Jan-10	Feb-10	Mar-10	Apr-10		
211.3	Benign neoplasm of colon	Doctor Name	11	35	39	20	25	19	18	15	35		
		Doctor Name	15	12	11	16	9	6	9	9	24		
		Doctor Name	45	37	54	52	54	33	31	39	42		
		Doctor Name	17	45	34	16	29	18	36	38	20		
		Doctor Name	24	35	19	13	18	18	17	15	24		
		Doctor Name	23	25	39	22	15	19	30	15	14		
		Doctor Name	24	23	39	56	21	24	30	39	22		
		Doctor Name	10	8	3	6	2	1	1	3	3		
		Doctor Name	71	103	87	78	43	74	67	84	74		
		211.3 Total			240	323	325	279	216	212	239	257	258
V76.51	Special screening for malignant neoplasms, colon	Doctor Name	19	20	36	26	41	40	21	32	18		
		Doctor Name	19	11	22	15	13	8	10	27	12		
		Doctor Name	22	31	32	22	33	38	25	16	33		
		Doctor Name	14	11	9	4	10	11	11	2	6		
		Doctor Name	28	28	16	16	21	31	18	26	23		
		Doctor Name	29	17	37	24	29	14	21	15	10		
		Doctor Name	34	19	22	20	20	10	26	28	17		
		Doctor Name	1		3		1			1			
		Doctor Name	4	12	14	10	7	5	10	9	8		
		V76.51 Total			170	149	191	137	175	157	142	156	127
555.9	Regional enteritis of unspecified site	Doctor Name	2	3	1	1	1		3	3	2		
		Doctor Name	6				2	4		1			
		Doctor Name	10	2	2	3	1	3	2	6	2		
		Doctor Name	6	5	2	5	8	6	6	6	2		
		Doctor Name	2	3	1	1	1	2	2	2	2		
		Doctor Name	15	5	4	2	5	7	4	4	5		
		Doctor Name	1	2	3		2	1	2	3			
		Doctor Name	4	4	1		3	1	1	3	2		
		555.9 Total			46	24	14	12	23	24	20	28	15
		787.20	Dysphagia, unspecified	Doctor Name	3	12	9		2	1	5	3	12
Doctor Name	1			5	1	2	8	2	4	7	7		
Doctor Name	18			14	12	15	21	16	12	31	9		
Doctor Name	9			12	8	4	6	3	6	6	3		
Doctor Name	4			7	14	4	14	10	5	8	6		
Doctor Name	1			7	2	2	3	10	6	12	6		
Doctor Name	4			7	2	1	2	3	3	5	3		
Doctor Name	1				1		1		1		1		
Doctor Name	9			6	13	4	3	2	2	10	8		
787.20 Total					50	70	62	32	60	47	44	82	55

**Physician Practice, USA  
Top 25 CPT Codes (DOS)**

Cptcode	Doctor Name	Apr-09	May-09	Jun-09	Jul-09	Aug-09	Sep-09	Oct-09	Nov-09	Dec-09	Jan-10	Feb-10	Mar-10	Apr-10
99213	Doctor Name	28	19	28	27	9	19	23	16	19	21	29	38	20
	Doctor Name	124	103	66	69	128	68	128	68	112	110	89	102	114
	Doctor Name	12	15	19	10	7	15	14	10	14	23	12	12	17
	Doctor Name	29	36	30	27	27	32	29	31	30	24	30	32	24
	Doctor Name	4		1		2	1	1	1		1	3	1	2
	Doctor Name	26	21	22	16	16	26	27	12	12	8	22	25	16
	Doctor Name	64	42	28	40	39	50	51	28	28	44	23	38	39
	Doctor Name	5	6	1	2	3		3	1	4	1	1	1	3
	Doctor Name	8	13	42	21	38	69	43	36	37	43	60	68	63
99213 Total		300	255	237	212	269	280	319	203	256	275	269	317	298
99244	Doctor Name	51	19	30	35	29	56	29	26	45	26	29	27	14
	Doctor Name	2		2	1	2	5	4	1	2			2	1
	Doctor Name	29	34	26	13	22	28	32	24	25	10	4	7	3
	Doctor Name	20	43	27	20	23	24	17	22	22	3	13	15	5
	Doctor Name	67	37	43	5	23	57	27	34	19	26	19	21	16
	Doctor Name	65	58	32	22	52	44	57	48	32	27	18	30	11
	Doctor Name	7	13	4	3	10	5	13	7	12	15	18	36	8
	Doctor Name		1											
	Doctor Name	30	27	18	12	16	19	19	16	9	6	7	6	6
99244 Total		271	232	182	111	177	238	198	178	166	113	108	144	64
99243	Doctor Name	21	8	1	3		1	2	1	1	4	2	7	1
	Doctor Name	51	57	38	30	68	31	37	34	53	50	42	34	45
	Doctor Name	14	20	32	38	28	39	23	34	18	13	12	29	13
	Doctor Name	5	12	5	6	8	10	11	5	8	7	4	4	3
	Doctor Name	10	3	13	3	6	10	4	4	2	6	3	5	4
	Doctor Name	13	8	19	6	7	11	4	3	5	1	3	2	
	Doctor Name	61	52	29	19	45	36	20	5	10	11	9	14	4
	Doctor Name	13	32	20	22	26	37	33	16	28	14	17	14	12
	99243 Total		188	192	157	127	188	175	134	102	125	106	92	109
99232	Doctor Name		20		35		13	5	35			19		42
	Doctor Name	14	9	39		34	21	19	15	39	13	37	30	43
	Doctor Name	39			20	35		26	37	16	14	36	34	18
	Doctor Name	7		24	12	9	16	13	21	12	37	3	14	18
	Doctor Name		2	1				1					1	
	Doctor Name	42	55	52	37	54	46				33		62	
	Doctor Name	11	12		17	13	14	3	17	12	18	14		19
	Doctor Name			2										
	Doctor Name	31	6	18	2	22		12	3	17	17		28	
99232 Total		144	104	136	123	167	110	79	128	96	132	109	169	140

## Physician Practice, USA

### Average Date of Service / Date of Entry Delay



Month of service	DOS / DOE Delay
4/2009	4.30
5/2009	5.46
6/2009	6.14
7/2009	3.67
8/2009	3.78
9/2009	5.40
10/2009	5.70
11/2009	5.60
12/2009	4.16
1/2010	4.48
2/2010	4.46
3/2010	4.11
4/2010	3.39